



## ACO Blue Roof Overflows

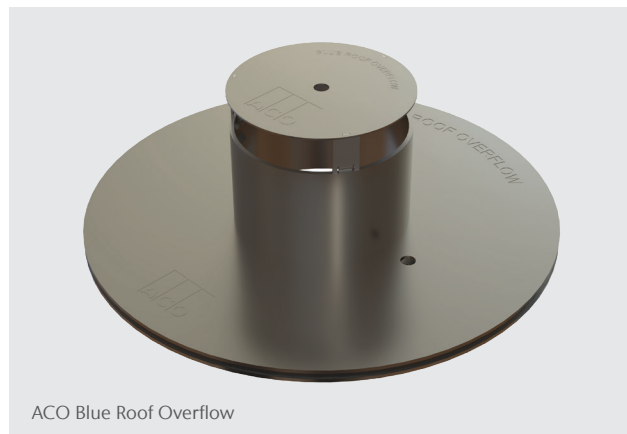
### DATA SHEET

ACO offers Blue Roof Overflows which, when combined with ACO Flow Restrictors can safely control the rate of runoff from a blue roof, without overloading the roof structure.

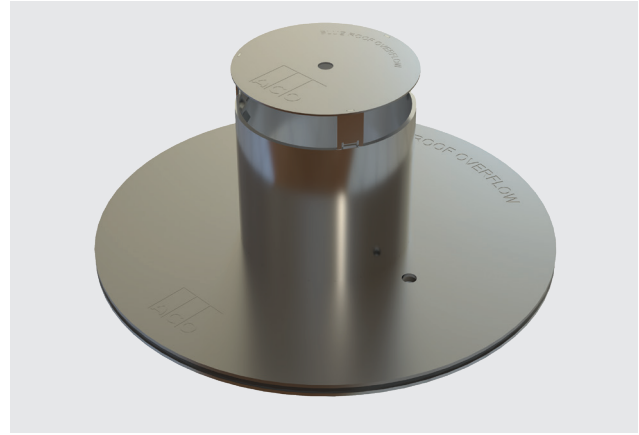
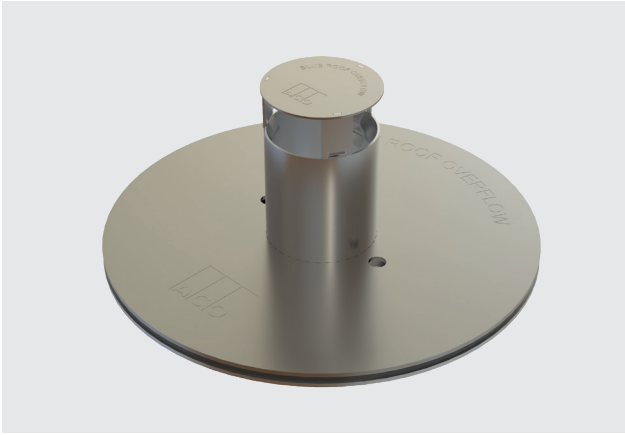
These products are key components to constructing the ACO patented blue roof attenuation system. The overflows are designed to fit the ACO range of HP vertical spigot and screw, 45- and 90-degree roof outlets<sup>1</sup> and accessories, however other manufacturer roof outlets can be accommodated. Please consult with ACO Design Services for further information. When used alongside ACO's patented RoofBloxx system, the overflows help ensure your blue roof meets BS 12056-3:2000 and site discharge requirements under planning conditions.

### Benefits and Features

- Wide flange with gasket and clamping ring allows the secondary membrane to be dressed, sealed and clamped around the outlet without disturbing the roofing membrane seal
- A choice of two overflow bore sizes to suit a variety of outlet sizes
- Available in a range of heights (85mm – 165mm) to suit standard ACO blue roof build-ups
- 300mm height versions can be cut to desired overflow level<sup>2</sup> on-site
- Manufactured from 304 grade stainless steel, pickle passivated to enhance corrosion resistance
- Supplied with cowl for added protection against ingress of debris and foreign materials
- Recommended for use with the ACO RoofBloxx Diffuser unit to provide easy access for routine maintenance
- Supplied complete with fixings, gasket and clamping ring



## Overview



### ACO Blue Roof Overflow 50-75

To suit ACO Rainwater outlets <sup>1</sup>: 50HP, 50/\*HP, 70HP, 75/\*HP

| Part No.           | Bore Size (A)<br>[mm] | Height (B)<br>[mm] | Base Plate (C)<br>[mm] | Weight<br>[kg] |
|--------------------|-----------------------|--------------------|------------------------|----------------|
| 20901              | 73                    | 85                 | 300                    | 3.93           |
| 20902              | 73                    | 125                | 300                    | 4.05           |
| 20903              | 73                    | 165                | 300                    | 4.16           |
| 20985 <sup>2</sup> | 73                    | 300                | 300                    | 4.75           |

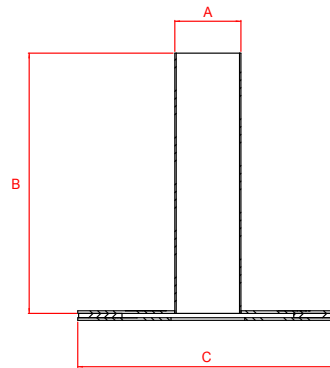
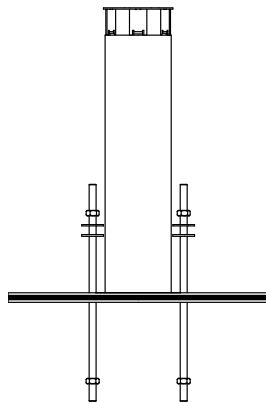
### ACO Blue Roof Overflow 100-150

To suit ACO Rainwater outlets <sup>1</sup>: 100HP, 100/\*HP, 150HP, 150/\*HP

| Part No.           | Bore Size (A)<br>[mm] | Height (B)<br>[mm] | Base Plate (C)<br>[mm] | Weight<br>[kg] |
|--------------------|-----------------------|--------------------|------------------------|----------------|
| 20904              | 135                   | 85                 | 380                    | 6.35           |
| 20905              | 135                   | 125                | 380                    | 6.82           |
| 20906              | 135                   | 165                | 380                    | 7.28           |
| 20988 <sup>2</sup> | 135                   | 300                | 380                    | 8.85           |

<sup>1</sup> Not suitable for ACO Balcony, Gully or Two-way outlets.

<sup>2</sup> When cutting to custom length, be sure to measure the overflow height from the appropriate datum, typically the underside of the main body base (see dimension B).



To download a copy of the ACO RoofBloxx Product Overview brochure visit [www.aco.co.uk/products/roofbloxx](http://www.aco.co.uk/products/roofbloxx)

#### ACO Building Drainage Contacts:

Customer Enquiries: [abdcommercial@aco.co.uk](mailto:abdcommercial@aco.co.uk)

Technical: [abdtechnical@aco.co.uk](mailto:abdtechnical@aco.co.uk)

Tel: 01462 810411

[www.aco.co.uk](http://www.aco.co.uk)

ACO. we care for water

