



ACO Mobile Fence

DATA SHEET

The ACO Mobile Fence is used as an efficient protective device for amphibians, reptiles and small animals.

ACO Mobile Fences offer a sophisticated system of a reinforced PE sheet, support posts and rubber tension cord that is quick and easy to set up. The special construction effectively prevents undermining and climbing over. The mobile fence has a fabric thickness of 260 g/m² for year-round use, and is 52cm tall when installed.

Benefits

- Smooth, tear-resistant, and dimensionally stable PE sheet, reinforced with fabric
- Weatherproof and UV stable
- Climbing protection (vertical overhang) of 8cm
- Anti-digging protection (horizontal tread) of 10cm
- Easy assembly and disassembly
- Lightweight



ACO Mobile Fence

Applications

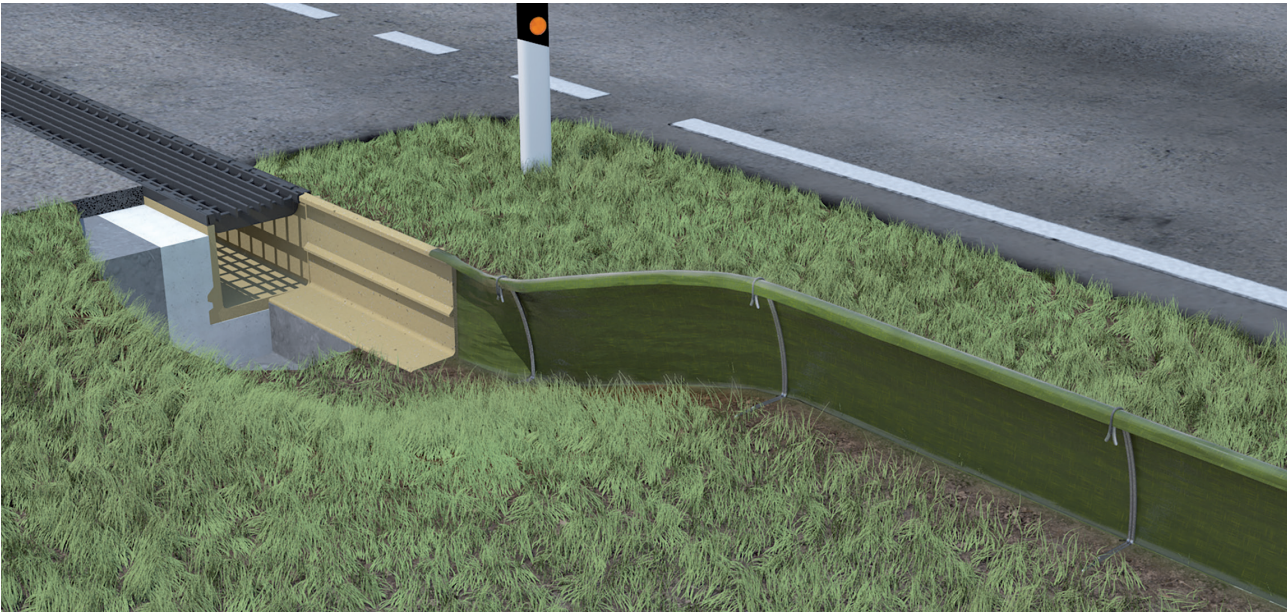
- Migratory paths in combination with research/relocation programmes
- Creating embankments to guide wildlife away from dangerous construction areas

System Overview

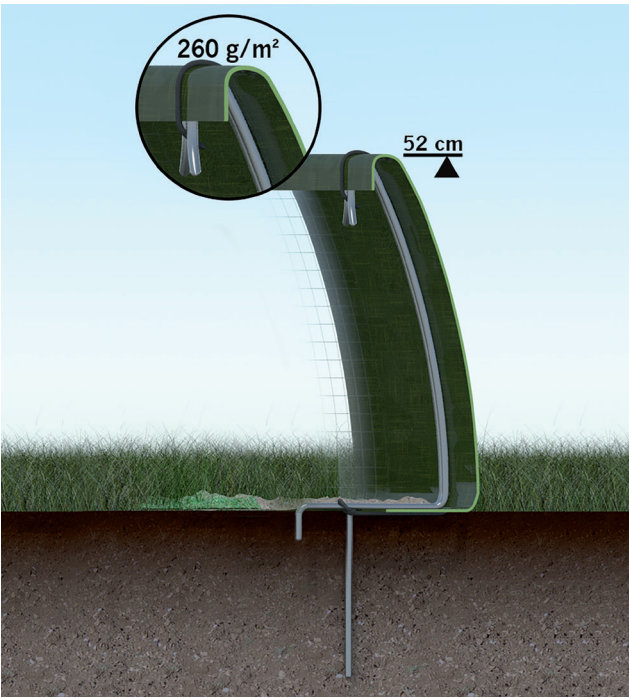


Product Code	Description	Length [m]	Height [mm]	Weight of film [g/m2]
40095	ACO Mobile Fence 50-260 g/m² full kit 100m*	100	520	260

* Full kit includes 100m PE sheet, 50 galvanised poles, and 50 elastic straps



ACO Mobile Fence and ACO Stop Channel



Compatibility

ACO Mobile Fences are compatible with ACO Climate tunnel entrances and ACO Stop Channels for temporary installations. The quick installation of the system allows the guide walls to be easily moved around to adapt to the changing needs of a construction site.



The practical advantages

Optimal material properties

Smooth, tear-resistant, and dimensionally stable PE sheet with fabric reinforcement

- Opaque fence material ensures rapid migration to the catch vessels/culverts
- Weather-resistant fence material, hot-dip galvanized support posts, permanently elastic rubber tension cord
- Weatherproof and UV-resistant
- Low workload during assembly and disassembly, thus easily moved around
- Space-saving during storage and transport
- Lightweight

Optimum shape

- Low obstacles on the approaching side (no disruptive support posts)
- Arch and curved upper edge make the ACO Mobile Fence safe for young amphibians and lizards to climb over, back into the protected area
- Double rod support post with double, torsion-proof ground anchoring
- The running surface can be covered with soil and with a little vegetation which enables a good guiding effect to the catch vessels for research/relocation
- Horizontal running surface offers optimal undermining protection
- Double rod support posts with rubber tension cords allow easy attachment of the fence material due to their inherently stable shape (close to the ground and protection against climbing over the top edge from the overhang side)

Biological suitability

An optimal shape and the special material properties of the fabric enable comprehensive protection.

The low-vegetated walking surface and the vertical opaque fence wall are significant advantages for the brisk migration of the animals to the catch vessels/culverts.

The protective fence is also particularly suitable for supervising young animal migrations and for scientific investigations.

Structural suitability

The assembly and disassembly is quick and easy due to the special double rod holding system with a rubber tensioning cord.

The support rod has an additional fixing point on the ground, so that twisting, e.g. during construction, in storms or snow loads, is not possible. The shape of the fence material is determined by the rod. Bending in the horizontal and vertical is also possible without any problems due to the tension (see installation recommendation).

Care and maintenance

The frame system keeps the fence material in tension. Pinning of the tread keeps the fabric on the ground, offers protection against infiltration and keeps the tread low in vegetation growth.

As with all temporary/permanent fencing regular inspections should be carried out on sensitive sites to ensure there has been no weather damage, or interference from pedestrians/larger animals.

Installation



STEP 1

Push the loop on the elasticated fixing line over the lower short vertical prong on the retaining post so that the line runs between the two sections of the retaining post. Hammer the double-pronged retaining posts into the ground at a maximum spacing of 2m so that a 20mm gap still remains from the ground and the fixing line is on the ground. The convex face of the retaining post should face the road or danger area.



STEP 2

Align the fixing line towards the road. Unroll the fabric sheet on the side facing the road and push the bottom section between the fixing line and the horizontal section of the retaining post.



STEP 3

Hammer the retaining posts the remaining 20mm into the ground.



STEP 4

Fold the fabric sheet up and over the retaining posts.



STEP 5

Pull the elasticated fixing line upwards centrally between the two sections of the retaining post, then tighten and clamp it into the V-shaped fork at the front of the retaining post so that the fence sheet is secured. At changes in gradient the fence sheet should be overlapped over the retaining post before tensioning with the fixing line to secure the overlapped sheet.



STEP 6

Use earth to cover the front strip of sheet in contact with the ground to ensure there are no gaps through which amphibians or animals can crawl. Additional tensioning is required at the start and end of the fence run: tie the ends of the sheet to a fixed point using a rope or similar; alternatively bury the ends of the sheet in the ground.



ACO Water Management Contacts:

Sales: customersupport@aco.co.uk

Technical: technical@aco.co.uk

Tel: 01462 816666

www.aco.co.uk

ACO. we care for water

