



ACO MultiDrain® Brickslot

Functional drainage, minimalist design

Product Catalogue



ACO MultiDrain® Brickslot

These discreet drainage covers provide an excellent solution for those seeking an aesthetically pleasing drainage option. Compatible with our MultiDrain and Multiline ranges, the Brickslot offers a wide variety of options, including bespoke designs, allowing it to be tailored to the specific needs of each project.



ACO. we care for water	4
What is ACO MultiDrain® Brickslot?	6
ACO MultiDrain® Brickslot features overview	8
ACO QuAD Hydraulic Design Software	10
ACO MultiDrain® Brickslot options	12
ACO MultiDrain® Brickslot bespoke options	13
ACO MultiDrain® Brickslot	14
Installation detail	29
Maintenance	31
Design support service	32
ACO BIM Models	33
Further Learning	34
ACO Professional Development	
Case Studies	
Colab	

ACO. we care for water

ACO is a Water-Tech company that protects water. Building on our global drainage expertise that protects people from water, we increasingly see our mission as also protecting water from people.

With the ACO WaterCycle, ACO provides systems that collect and channel, clean, retain and ultimately reuse water. In this way, ACO contributes to the preservation of clean groundwater as a vital resource, and makes a contribution to tomorrow's world. In its Agenda 2030, the UN global community set the improvement of water quality as one of 17 sustainable development goals.

Intelligent drainage systems from ACO increasingly use smart technology to ensure that rainwater and wastewater are drained, or temporarily stored. With innovative separation and filter technology, we prevent water contamination by pollutants such as fat and grease, fuels, heavy metals and microplastics.

Today, ACO goes one step further: we accept the challenge of reusing water, and thus establishing a resource-saving cycle. For all products and systems, ACO attaches great importance to durability, reusability and a low carbon footprint. The pursuit of sustainability is an ongoing process that we strive to meet every day.

The ACO Group is a global family business that is one of the world market leaders in the Water-Tech segment. Founded in Schleswig-Holstein in 1946, it operates as a transnational network in over 50 countries. Worldwide, ACO is characterised by a high level of decentralised ownership, and explicit regional market proximity.

www.aco.com



Managing Directors ACO Group
Iver and Hans-Julius Ahlmann



Headquarters of the ACO Group
in Rendsburg/Büdelndorf



5,200

employees in more than 47 countries (Europe, North and South America, Asia, Australia, Africa)

1 Billion

Euro Sales in 2021

37

production sites in 18 countries

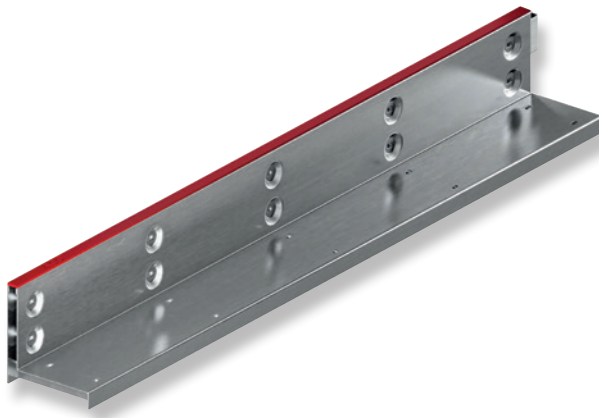


ACO Academy
for practical training

Water protection and rainwater management

What is ACO MultiDrain® Brickslot?

Aesthetic and discreet drainage solutions are key considerations included in the architectural planning of outdoor areas, drainage can either complete or ruin a visually pleasing surface. Line drainage systems offer that pleasing look, while ensuring effective removal of surface water even in sloped installations.



6



ACO MultiDrain® MD



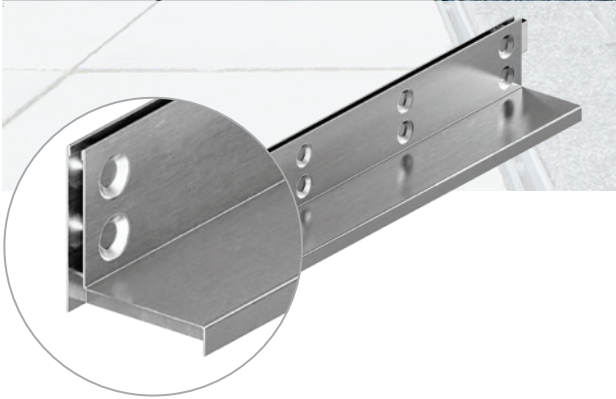
ACO MultiDrain® PPD



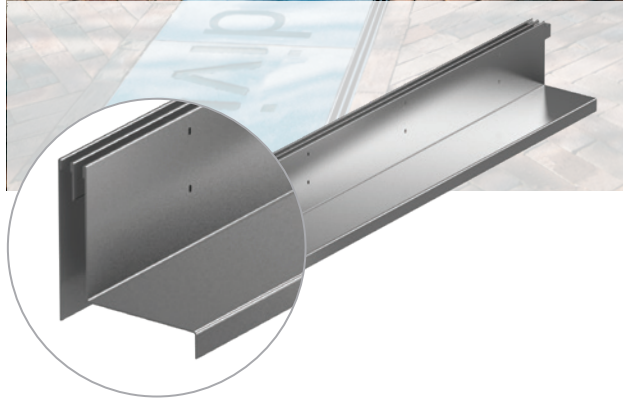
ACO Multiline Sealin

ACO MultiDrain® Brickslot is a range of discreet line drainage covers designed for use in block paving surfaces and compatible with our MultiDrain and Multiline systems. Its broad selection of covers and options allows designers to find a system that meets the project's design requirements while achieving an aesthetic finish.

MultiDrain® Brickslot SINGLE



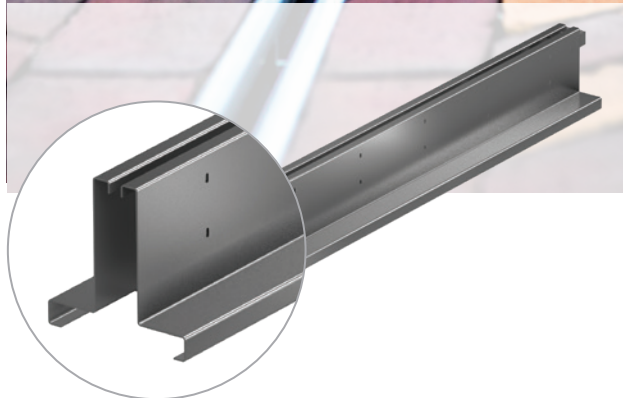
MultiDrain® Brickslot TWIN



MultiDrain® Brickslot TRIPLE

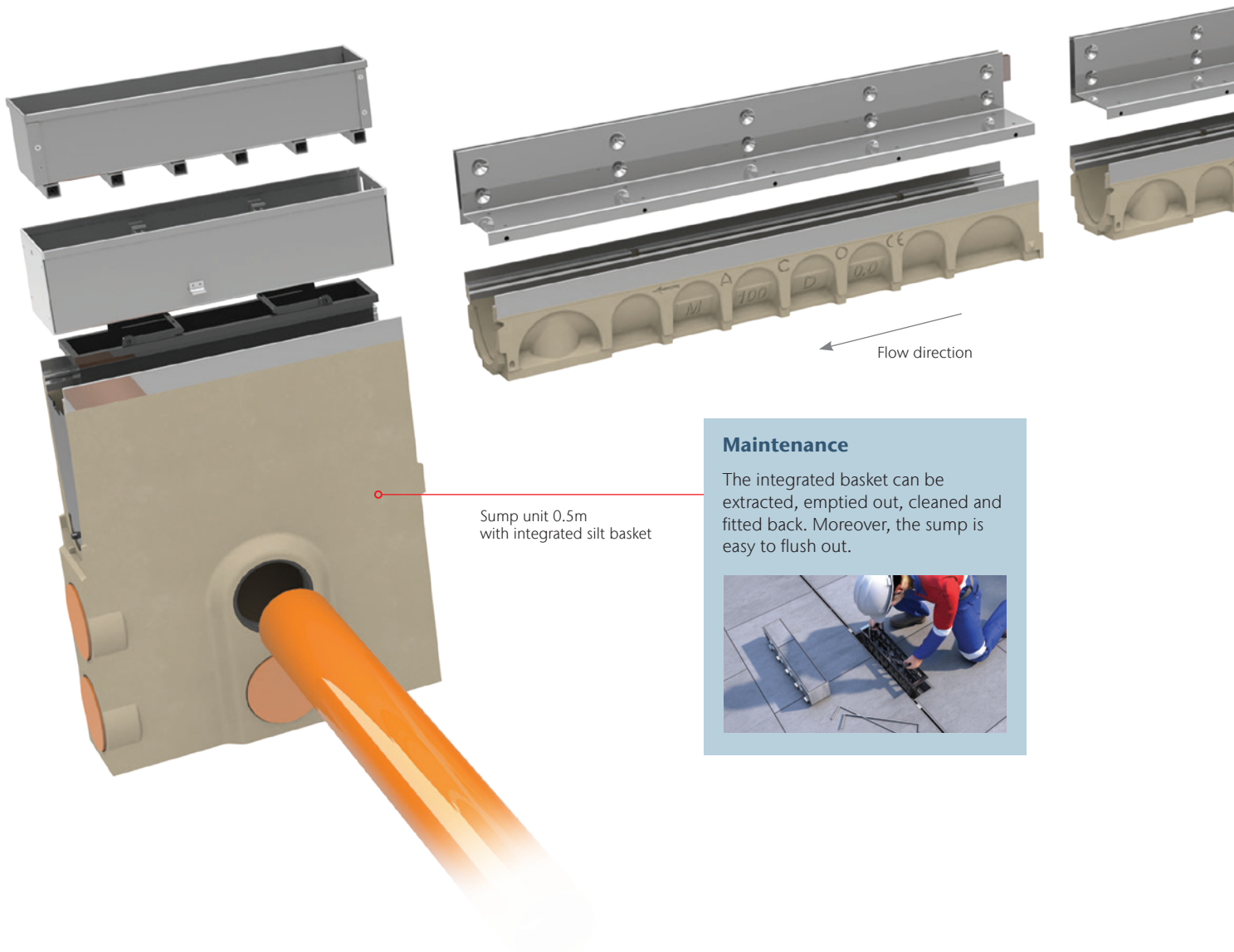


MultiDrain® Brickslot STRIP



ACO MultiDrain® Brickslot features overview

- Suitable for a whole range of paving blocks made of various materials
- Three upstand heights available as standard: 65mm, 105mm and 150mm. Additional heights are available upon customer's request
- Brickslot is suitable for the following **ACO MultiDrain® MD**, **ACO MultiDrain® PPD** and **ACO Multiline Sealin** drainage systems
- The grates are fitted with a protective cover, which reduces the risk of damage during installation
- Access units for easy maintenance and cleaning
- Brickslot is in full compliance with BS EN 1433
- Inlet slot of 10mm max width gives Heelguard™ protection



Sump unit 0.5m with integrated silt basket

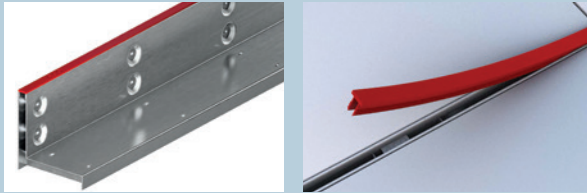
Maintenance

The integrated basket can be extracted, emptied out, cleaned and fitted back. Moreover, the sump is easy to flush out.



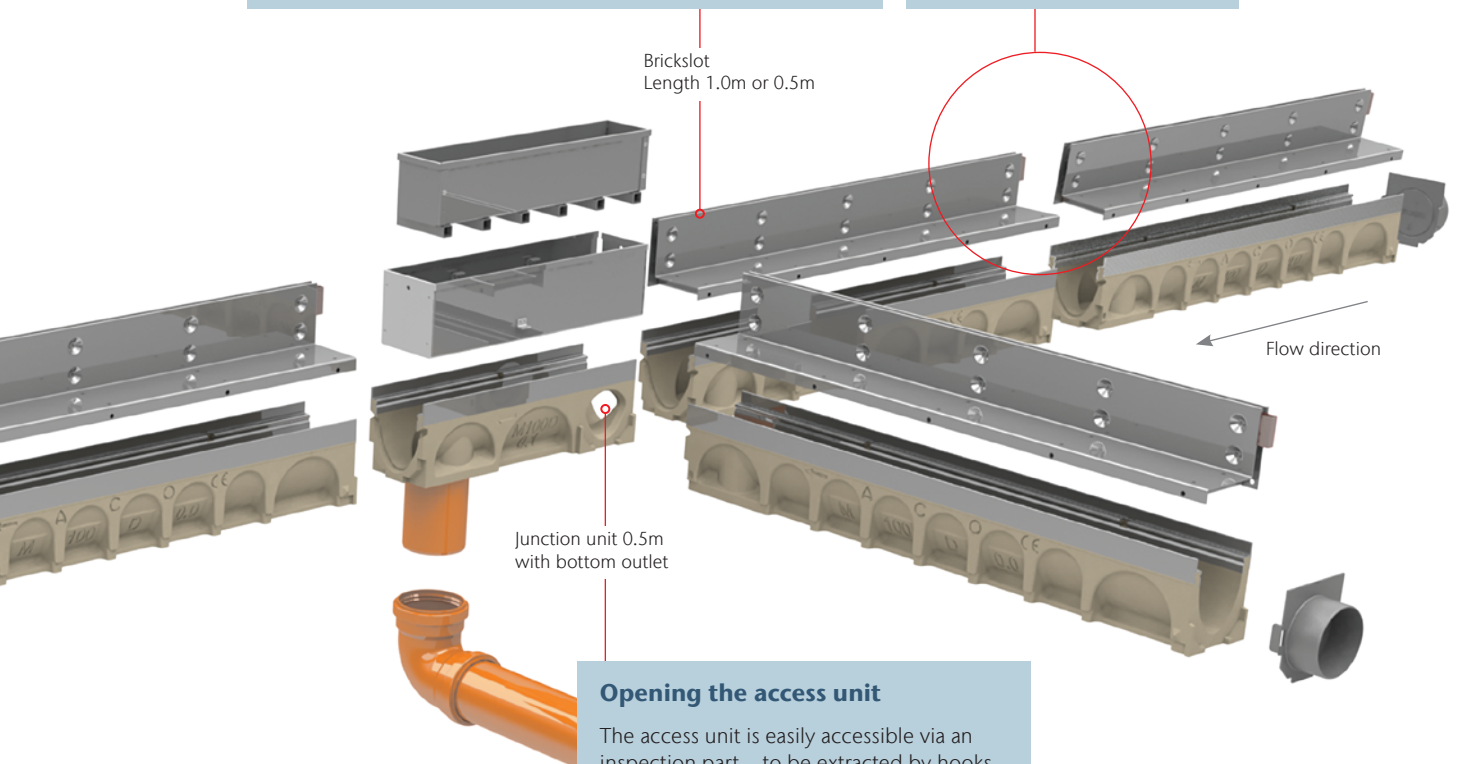
Edge protection

The cover protecting the inlet slot not only protects the MultiDrain Brickslot against damage during installation, but also shields the channel from dirt.



Easy installation

Thanks to the alignment tab, the MultiDrain Brickslots are aligned and connected accurately, ensuring a fluid line and highly aesthetic design.



Opening the access unit

The access unit is easily accessible via an inspection part – to be extracted by hooks (Product code 1367) or keys (Product code 447850).



Load Classes



C 250

Parking areas, service stations (cars) and slow-moving light commercial vehicles



D 400

Public highways, parking areas for all types of vehicles, distribution yards

ACO QuAD Hydraulic Design Software

Try our free design tool

The free-to-use ACO QuAD Hydraulic Design software has unprecedented levels of choice and flexibility built-in, to enable the efficient and accurate hydraulic design of any surface water management scheme. Use the tool today to help you to design schemes using ACO MultiDrain® Brickslot.



The hydraulic engine has been robustly tested and is the tool used by ACO's internal Design Services Team in modelling surface water solutions for customers.

ACO QuAD Hydraulic Design software uses differential equations for spatially varied flow that online alternative solutions cannot accurately match. For example the Manning's equation for steady uniform flow does not work with level channels and is grossly inaccurate on shallow gradients.

Here are some of the features it includes:

- Powerful project-based software
- Create catchment models that are fully editable
- PDF summary document output
- Cloud based – all designs are stored securely on our server against your login
- Integrated rainfall data for the whole of the UK

QuAD Features Overview

Cloud based

The software means increased efficiency providing the design resources you need when you need it, allowing you to deploy the same design capability consistently, and with the same consistency in results every time.



Flexible catchment design

QuAD supports designers in creating catchment areas. Supplementary catchment areas can be easily added to previously designed channel runs, providing flexibility when designing upstream and downstream features.



Product + value optimiser

Optimising the specific channel runs can be done with the optimiser feature selecting the smallest product suitable. Excavation and concrete requirements are also provided.



Attenuation assessments

Calculate the attenuation required for the project and compare it with the storage available in the channel design. Attenuation volume is presented along with suitable options for storage.



Flexible download format

Output can be generated for all or parts of the project and can be generated in pdf or CSV formats.



Application

Application selection ensure designers are able to get quick and accurate guidance in selection of the most suitable products based on the type of application the catchment is to cater for.



Rainfall assist

Rainfall intensity by location matters in design. QuAD provides a site locator map enabling the most accurate intensity to be input.



Resilience assessment

By inputting anticipated sedimentation rates and sedimentation density the QuAD software enables the designer to test their suggested maintenance schedules.



Secure scheme filing

All designs created by registered users are stored on a secure server and are password protected. Past projects are easily retrieved from the personalised menu.

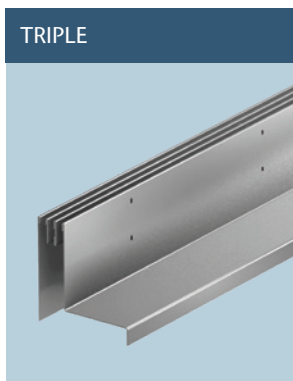
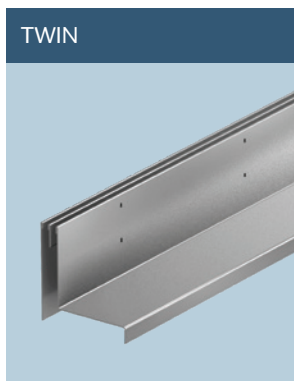
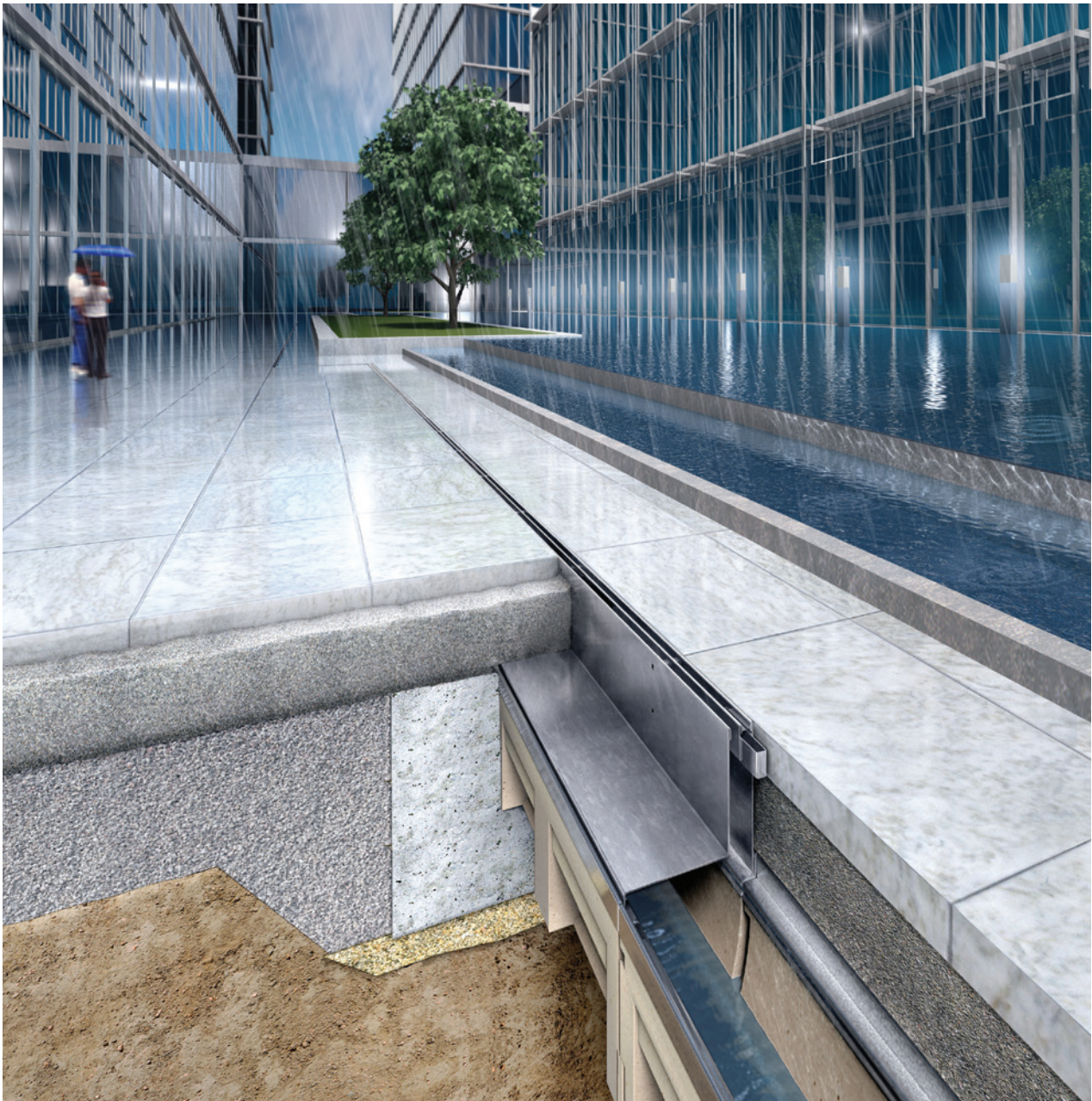


Knowledge + support

Technical and design support is available through the askACO Knowledge Base (self-help), askACO live chat or through a Design submission form.



ACO MultiDrain® Brickslot options



Bespoke ACO MultiDrain® Brickslot options

Bespoke ACO MultiDrain® Brickslot is custom designed to suit specific customer requirements for MultiDrain 100, 150 and 200 channels.

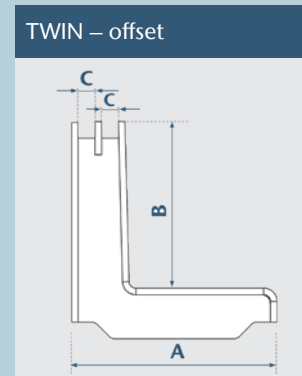
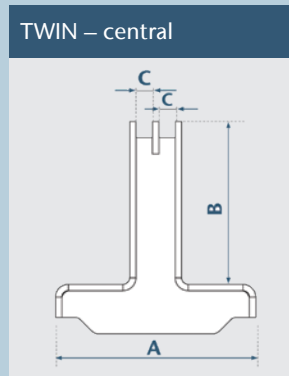
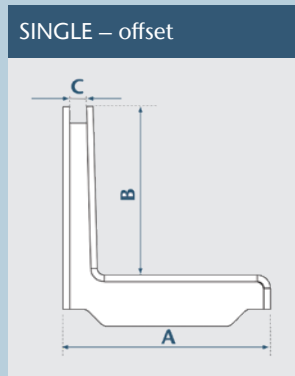
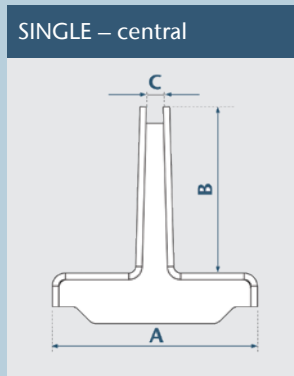
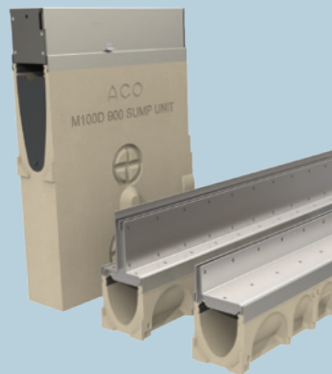
The Brickslot is offered with a single or twin slot which can be positioned centrally over the channel or offset to the edge. The Brickslot can be manufactured from mild steel with a hot dipped galvanised finish or stainless steel for increased corrosion resistance.

The Brickslot gratings with a 10mm slot width is certified to BS EN 1433:2002 with a load class of D400 when used with MultiDrain channels.

Brickslot is ideal in applications where aesthetics are of high importance. The discreet drainage can blend into the natural lines of the environment, or alternatively can be used to define perimeters and boundary lines of features or paving styles to provide an aesthetic and functional break.

Features and benefits

- Discreet drainage
- Custom sized to suit site specific applications
- BS EN 1433:2002, D 400 load class (with 10mm or custom slot sizes)
- Custom sized access units available
- Galvanised steel and stainless steel variants
- Upstand sizes from 30mm to 200mm
- Suitable for M100, M150 and M200
- Applications: Town centres, indoor shopping centres, urban landscaping, premium locations



Description: **A – Channel width:** M100D, M150D, M200D, **B – Height:** 30mm – 200mm, **C – Slot width:** Custom sizes, **D – Length:** Custom sizes up to 1m

ACO MultiDrain® Brickslot

for 100mm drainage systems



Product features

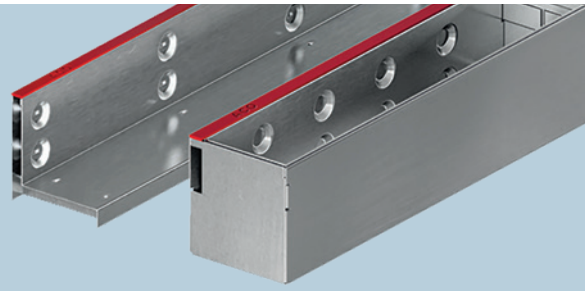
14

- A new generation of brickslots
- Brickslots are placed into the channel to ensure optimal outlet performance
- The alignment tab ensures the parts are connected accurately
- Reinforced upper edge
- Heights of 65mm, 105mm and 150mm for various ways of installation
- Supplied with cover strips protecting the inlet during installation
- Drainage system fully certificated to BS EN 1433:2002
- Net width 100mm
- Load class C250 - Single, Twin, Triple, Strip
- Load class D400 - Single, Twin
- Suitable for the following systems:
 - ACO MultiDrain® MD/S
 - ACO MultiDrain® PPD
 - ACO Multiline Sealin

Load class C 250

ACO MultiDrain® Brickslot, Load class C 250

- 10mm lateral slot for Brickslot Single and Brickslot Strip
- 2x8mm lateral slot for Brickslot Twin and 3x8mm lateral slot for Brickslot Triple
- Slot heights: 65mm, 105mm and 150mm
- Applications: Pedestrian areas and car parks



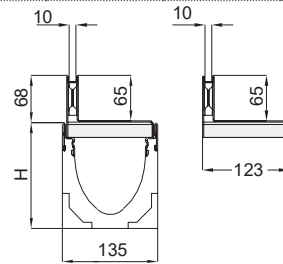
Product Code	Description	Length	Width	Slot Height	Size of the Inlet Opening	Inlet Cross-section	Weight	Pallet Qty

Brickslot Single for MultiDrain 100

445926	Galvanised steel	1000	123	65	10	100	4.3	72
445927	Galvanised steel	500	123	65	10	100	2.3	100
445928	Stainless steel	1000	123	65	10	100	4.2	72
445929	Stainless steel	500	123	65	10	100	2.2	100

Brickslot Single - access unit for MultiDrain 100

445931	Galvanised steel	500	123	65	10	100	3.7	60
445930	Stainless steel	500	123	65	10	100	3.8	60

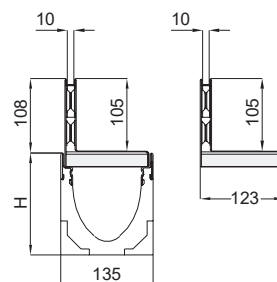
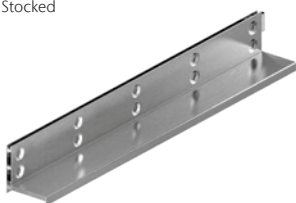
**Brickslot Single for MultiDrain 100**

445598 *	Galvanised steel	1000	123	105	10	100	5.3	72
445599 *	Galvanised steel	500	123	105	10	100	2.8	100
445600 *	Stainless steel	1000	123	105	10	100	5.2	72
445601 *	Stainless steel	500	123	105	10	100	2.7	100
446971	Stainless steel 316	1000	123	105	10	100	5.2	72
446972	Stainless steel 316	500	123	105	10	100	2.7	100

Brickslot Single access unit for MultiDrain 100

445603 *	Galvanised steel	500	123	105	10	100	4.9	40
445602 *	Stainless steel	500	123	105	10	100	5.0	40
446973	Stainless steel 316	500	123	105	10	100	5.0	40

* Stocked



Load class C 250

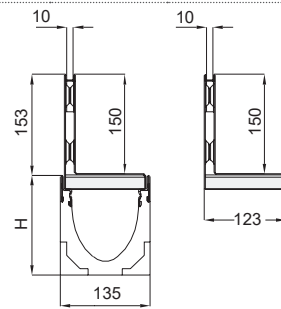
Product Code	Description	Length [mm]	Width [mm]	Slot Height [mm]	Size of the Inlet Opening [mm]	Inlet Cross-section [cm ² /m]	Weight [kg]	Pallet Qty

Brickslot Single for MultiDrain 100

445932	Galvanised steel	1000	123	150	10	100	6.4	48
445933	Galvanised steel	500	123	150	10	100	3.3	96
445934	Stainless steel	1000	123	150	10	100	6.3	48
445935	Stainless steel	500	123	150	10	100	3.3	96

Brickslot Single - access unit for MultiDrain 100

445937	Galvanised steel	500	123	150	10	100	6.2	40
445936	Stainless steel	500	123	150	10	100	6.3	40

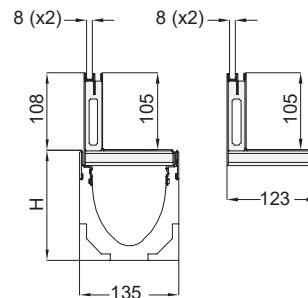


Brickslot Twin for MultiDrain 100

447185	Galvanised steel	1000	123	105	2 x 8	160	5.9	40
447186	Galvanised steel	500	123	105	2 x 8	160	3.1	80
445938	Stainless steel	1000	123	105	2 x 8	160	5.7	40
445939	Stainless steel	500	123	105	2 x 8	160	3.0	80

Brickslot Twin - access unit for MultiDrain 100

447187	Galvanised steel	500	123	105	2 x 8	160	5.2	10
445940	Stainless steel	500	123	105	2 x 8	160	5.3	10



Load class C 250

Product Code	Description	Length [mm]	Width [mm]	Slot Height [mm]	Size of the Inlet Opening [mm]	Inlet Cross-section [cm ² /m]	Weight [kg]	Pallet Qty

Brickslot Triple for MultiDrain 100

447768	Galvanised steel	1000	123	105	3 x 8	240	6.4	40
447769	Galvanised steel	500	123	105	3 x 8	240	3.3	10
445941	Stainless steel	1000	123	105	3 x 8	240	6.2	40
445942	Stainless steel	500	123	105	3 x 8	240	3.2	10

Brickslot Triple - access unit for MultiDrain 100

447770	Galvanised steel	500	123	105	3 x 8	240	5.4	10
445943	Stainless steel	500	123	105	3 x 8	240	5.5	10

**Brickslot Strip for MultiDrain 100**

445944	Stainless steel	1000	123	105	10	100	5.7	48
445945	Stainless steel	500	123	105	10	100	2.9	48

Brickslot Strip - access unit for MultiDrain 100

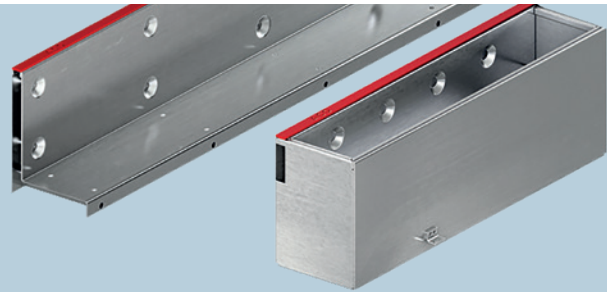
445946	Stainless steel	500	123	105	10	100	6.8	15
--------	-----------------	-----	-----	-----	----	-----	-----	----



Load class D 400

ACO MultiDrain® Brickslot, Load class D 400

- Brickslot welded solution
- With 10mm lateral slot
- Brickslot height 105mm and 150mm
- Applications: Pedestrian areas, car parks and commercial zones



Product Code	Description	Length [mm]	Width [mm]	Slot Height [mm]	Size of the Inlet Opening [mm]	Inlet Cross-section [cm ² /m]	Weight [kg]	Pallet Qty

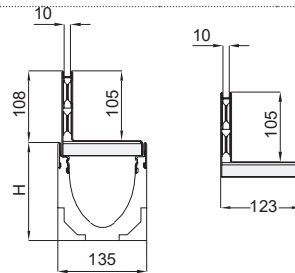
Brickslot Single for MultiDrain 100

446015 *	Galvanised steel	1000	123	105	10	100	6.8	60
446016 *	Galvanised steel	500	123	105	10	100	3.5	120
446018 *	Stainless steel	1000	123	105	10	100	6.7	60
446019 *	Stainless steel	500	123	105	10	100	3.4	120

Brickslot Single - access unit for MultiDrain 100

446017 *	Galvanised steel	500	123	105	10	100	6.5	50
446020 *	Stainless steel	500	123	105	10	100	6.6	50

* Stocked

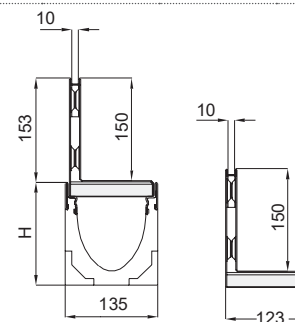


Brickslot Single for MultiDrain 100

446021	Galvanised steel	1000	123	150	10	100	8.4	48
446022	Galvanised steel	500	123	150	10	100	4.3	96
446024	Stainless steel	1000	123	150	10	100	8.1	48
446025	Stainless steel	500	123	150	10	100	4.1	96

Brickslot Single - access unit for MultiDrain 100

446023	Galvanised steel	500	123	150	10	100	8.1	40
446026	Stainless steel	500	123	150	10	100	8.2	40



Load class D 400

Product Code	Description	Length	Width	Slot Height	Size of the Inlet Opening	Inlet Cross-section	Weight	Pallet Qty

Brickslot Twin for MultiDrain 100

23480 *	Galvanised steel	1000	123	105	2 x 10	200	12.9	72
23481 *	Galvanised steel	500	123	105	2 x 10	200	6.1	108
23490 *	Stainless steel	1000	123	105	2 x 10	200	13	72
23491 *	Stainless steel	500	123	105	2 x 10	200	6.5	108

Brickslot Twin - access unit for MultiDrain 100

23482 *	Galvanised steel	500	123	105	2 x 10	200	8.1	72
23492 *	Stainless steel	500	123	105	2 x 10	200	11.3	72

*Stocked (limited)

MultiDrain Brickslot Twin D400, not supplied with red installation strip as standard

**Brickslot Twin Central for MultiDrain 100**

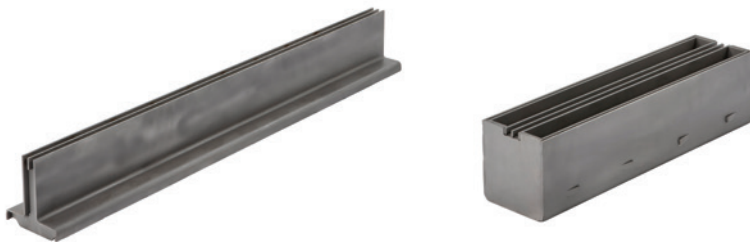
23483 *	Galvanised steel	1000	123	105	2 x 10	200	12.5	68
23484 *	Galvanised steel	500	123	105	2 x 10	200	7	136
23493 *	Stainless steel	1000	123	105	2 x 10	200	11.7	68
23494 *	Stainless steel	1000	123	105	2 x 10	200	5.8	136

Brickslot Twin Central - access unit for MultiDrain 100

23485 *	Galvanised steel	500	123	105	2 x 10	200	8.2	54
23495 *	Stainless steel	500	123	105	2 x 10	200	14.2	54

*Stocked (limited)

MultiDrain Brickslot Twin D400, not supplied with red installation strip as standard



Accessories

Product Code	Description	Suitable for	Weight [kg]	Pack Qty
Accessories				
1367	Lifting hook for Brickslot access unit ■ For lifting Brickslot access unit inner part ■ Galvanised steel	Brickslot access unit	0.5	1
447850	Lifting key for Brickslot access unit ■ For lifting Brickslot Single in D 400 and Brickslot Twin and Triple in C 250 ■ Galvanised steel	Brickslot access unit	0.3	2
446431		Brickslot Single 65	0.08	2
446432	End cap – Single ■ For covering side openings	Brickslot Single 105	0.1	2
449198	■ Stainless steel	Brickslot Single 105, SS 316	0.1	2
446433		Brickslot Single 150	0.2	2
447182	End cap – Twin, Triple, Strip	Brickslot Double 105	0.1	2
447183	■ For covering side openings	Brickslot Triple 105	0.1	2
447184	■ Stainless steel	Brickslot Strip 150	0.1	2



Lifting hook for Brickslot access unit



Lifting key for Brickslot access unit



Single end cap



End cap – Double, Triple, Strip

ACO MultiDrain® Brickslot

for 150mm drainage systems



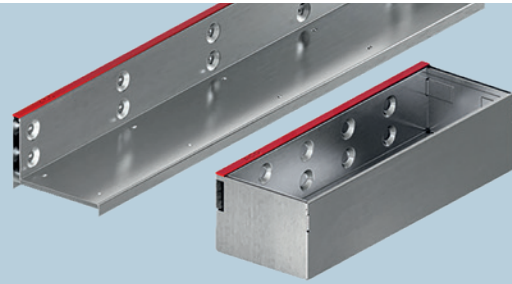
Product features

- A new generation of Brickslots
- Brickslots are placed into the channel to ensure optimal outlet performance
- The alignment tab ensures the parts are connected accurately
- Reinforced upper edge
- Construction heights of 105mm and 150mm for various ways of installation
- Drainage system certificated to BS EN 1433:2002
- Net width 150mm
- Load class C250 - Twin, Triple
- Load class D400 - only Single
- Suitable for the following systems:
 - ACO MultiDrain® MD
 - ACO MultiDrain® PPD
 - ACO Multiline Sealin

Load class C 250

ACO MultiDrain® Brickslot, Load class C 250

- 2x8mm lateral slot for Brickslot Twin and 3x8mm lateral slot for Brickslot Triple
- Slot height 105mm
- Applications: Pedestrian areas and car parks



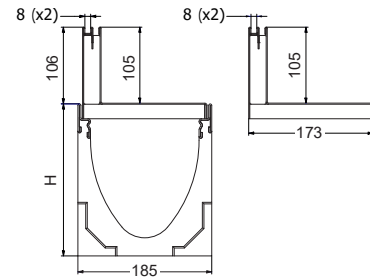
Product Code	Description	Length [mm]	Width [mm]	Slot Height [mm]	Size of the Inlet Opening [mm]	Inlet Cross-section [cm ² /m]	Weight [kg]	Pallet Qty

Brickslot Twin for MultiDrain 150

448215	Galvanised steel	1000	173	105	2 x 8	160	6.8	40
448216	Galvanised steel	500	173	105	2 x 8	160	3.5	80
448218	Stainless steel	1000	173	105	2 x 8	160	6.6	40
448219	Stainless steel	500	173	105	2 x 8	160	3.4	80

Brickslot Twin - access unit for MultiDrain 150

448217	Galvanised steel	500	173	105	2 x 8	160	6.0	48
448220	Stainless steel	500	173	105	2 x 8	160	6.1	48

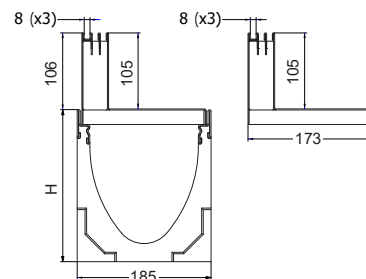


Brickslot Triple for MultiDrain 150

448227	Galvanised steel	1000	173	105	3 x 8	240	7.3	40
448228	Galvanised steel	500	173	105	3 x 8	240	3.8	80
448230	Stainless steel	1000	173	105	3 x 8	240	7.0	40
448231	Stainless steel	500	173	105	3 x 8	240	3.7	80

Brickslot Triple - access unit for MultiDrain 150

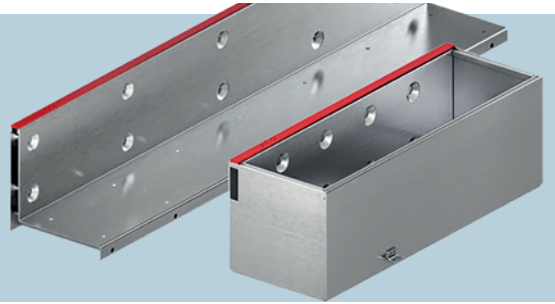
448229	Galvanised steel	500	173	105	3 x 8	240	6.2	48
448232	Stainless steel	500	173	105	3 x 8	240	6.3	48



Load class D 400

ACO MultiDrain® Brickslot, Load class D 400

- Brickslot welded solution
- With 10mm lateral slot
- Brickslot height 105mm and 150mm
- Applications: Pedestrian areas, car parks and commercial zones



Product Code	Description	Length	Width	Slot Height	Size of the Inlet Opening	Inlet Cross-section	Weight	Pallet Qty

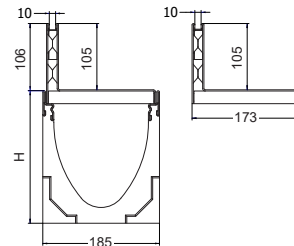
Brickslot Single for MultiDrain 150

446027 *	Galvanised steel	1000	173	105	10	100	8.4	40
446028 *	Galvanised steel	500	173	105	10	100	4.5	80
446030 *	Stainless steel	1000	173	105	10	100	8.1	40
446031 *	Stainless steel	500	173	105	10	100	4.3	80

Brickslot Single - access unit for MultiDrain 150

446029 *	Galvanised steel	500	173	105	10	100	7.7	48
446032 *	Stainless steel	500	173	105	10	100	7.8	48

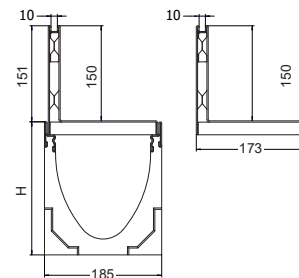
* Stocked

**Brickslot Single for MultiDrain 150**

446033	Galvanised steel	1000	173	150	10	100	9.8	32
446034	Galvanised steel	500	173	150	10	100	5.2	64
446036	Stainless steel	1000	173	150	10	100	9.5	32
446037	Stainless steel	500	173	150	10	100	5.0	64

Brickslot Single - access unit for MultiDrain 150

446035	Galvanised steel	500	173	150	10	100	9.5	32
446038	Stainless steel	500	173	150	10	100	9.6	32



Accessories

Product Code	Description	Suitable for	Weight [kg]	Pack Qty
Accessories				
1367	Lifting hook for Brickslot access unit ■ For lifting Brickslot access unit inner part ■ Galvanised steel	Brickslot access unit	0.5	1
447850	Lifting key for Brickslot access unit ■ For lifting Brickslot Single in D 400 and Brickslot Twin and Triple in C 250 ■ Galvanised steel	Brickslot access unit	0.3	2
446432	End cap – Single ■ For covering side openings	Brickslot Single 105	0.1	2
446433	■ Stainless steel	Brickslot Single 105	0.2	2
447182	End cap – Twin, Triple ■ For covering side openings	Brickslot Twin 105	0.1	2
447183	■ Stainless steel	Brickslot Triple 105	0.1	2



Lifting hook for Brickslot access unit



Lifting key for Brickslot access unit



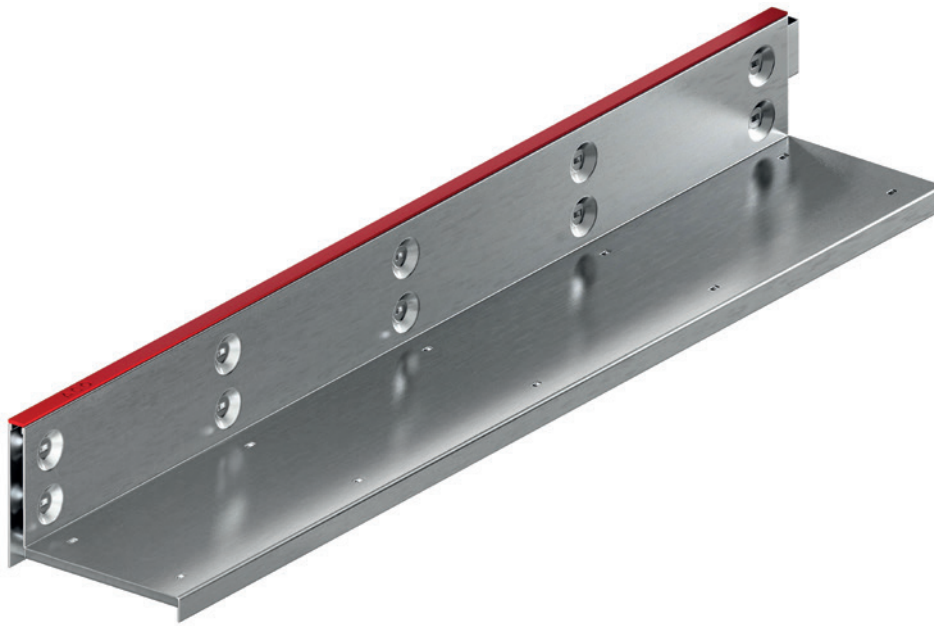
Single end cap



End cap – Double, Triple, Strip

ACO MultiDrain® Brickslot

for 200mm drainage systems



Product features

- A new generation of Brickslots
- Brickslots are placed into the channel to ensure optimal outlet performance
- The alignment tab ensures the parts are connected accurately
- Reinforced upper edge
- Heights of 105mm and 150mm for various ways of installation
- Supplied with cover strips protecting the inlet during installation
- Drainage system certificated to BS EN 1433:2002
- Net width 200mm
- Load class C250 - Twin, Triple
- Load class D400 - only Single
- Suitable for the following systems:
 - ACO MultiDrain® MD
 - ACO MultiDrain® PPD
 - ACO Multiline Sealin

Load class C 250

ACO MultiDrain® Brickslot, Load class C 250

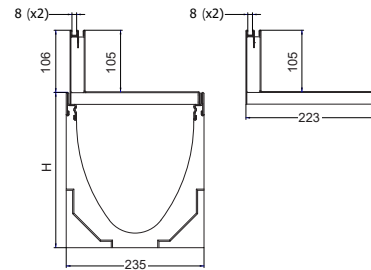
- 2x8mm lateral slot for Brickslot Twin and 3x8mm lateral slot for Brickslot Triple
- Slot height 105mm
- Applications: Pedestrian areas and car parks



Product Code	Description	Length [mm]	Width [mm]	Slot Height [mm]	Size of the	Inlet	Weight [kg]	Pallet Qty
					Inlet Opening	Cross-section		
Brickslot Twin for MultiDrain 200								
448221	Galvanised steel	1000	223	105	2 x 8	160	8.3	36
448222	Galvanised steel	500	223	105	2 x 8	160	4.3	72
448224	Stainless steel	1000	223	105	2 x 8	160	8.0	36
448225	Stainless steel	500	223	105	2 x 8	160	4.2	72

Brickslot Twin - access unit for MultiDrain 200

448223	Galvanised steel	500	223	105	2 x 8	160	6.8	36
448226	Stainless steel	500	223	105	2 x 8	160	6.9	36

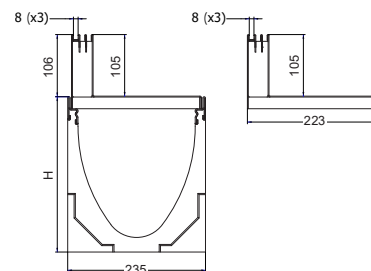


Brickslot Triple for MultiDrain 200

448233	Galvanised steel	1000	223	105	3 x 8	240	8.8	36
448234	Galvanised steel	500	223	105	3 x 8	240	4.6	72
448236	Stainless steel	1000	223	105	3 x 8	240	8.5	36
448237	Stainless steel	500	223	105	3 x 8	240	4.4	72

Brickslot Triple - access unit for MultiDrain 200

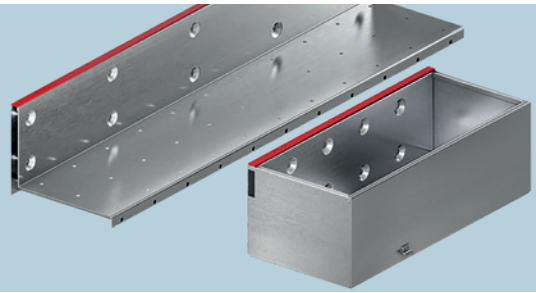
448235	Galvanised steel	500	223	105	3 x 8	240	7.0	36
448238	Stainless steel	500	223	105	3 x 8	240	7.1	36



Load class D 400

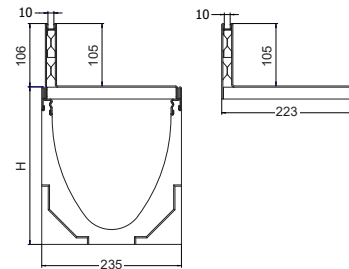
ACO MultiDrain® Brickslot, Load class D 400

- With 10mm lateral slot
- Brickslot height 105mm and 150mm
- Applications: Pedestrian areas, car parks and commercial zones



Product Code	Description	Length [mm]	Width [mm]	Slot Height [mm]	Size of the Inlet Opening [mm]	Inlet Cross-section [cm ² /m]	Weight [kg]	Pallet Qty
Brickslot Single for MultiDrain 200								
446039 *	Galvanised steel	1000	223	105	10	100	10.5	36
446040 *	Galvanised steel	500	223	105	10	100	5.6	72
446042 *	Stainless steel	1000	223	105	10	100	10.1	36
446043 *	Stainless steel	500	223	105	10	100	5.4	72
Brickslot Single - access unit for MultiDrain 200								
446041 *	Galvanised steel	500	223	105	10	100	8.9	36
446044 *	Stainless steel	500	223	105	10	100	9.0	36

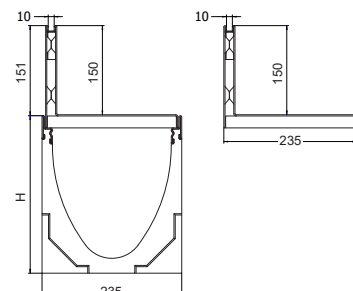
* Stocked

**Brickslot Single for MultiDrain 200**

446045	Galvanised steel	1000	223	150	10	100	12.0	24
446046	Galvanised steel	500	223	150	10	100	6.4	48
446048	Stainless steel	1000	223	150	10	100	11.5	24
446049	Stainless steel	500	223	150	10	100	6.1	48

Brickslot Single - access unit for MultiDrain 200

446047	Galvanised steel	500	223	150	10	100	10.9	24
446050	Stainless steel	500	223	150	10	100	11.0	24



Accessories

Product Code	Description	Suitable for	Weight [kg]	Pack Qty
Accessories				
1367	Lifting hook for Brickslot access unit ■ For lifting Brickslot access unit inner part ■ Galvanised steel	Brickslot access unit	0.5	1
447850	Lifting key for Brickslot access unit ■ For lifting Brickslot Single in D 400 and Brickslot Twin and Triple in C 250 ■ Galvanised steel	Brickslot access unit	0.3	2
446432	End cap – Single ■ For covering side openings	Brickslot Single 105	0.1	2
446433	■ Stainless steel	Brickslot Single 105	0.2	2
447182	End cap – Twin, Triple ■ For covering side openings	Brickslot Double 105	0.1	2
447183	■ Stainless steel	Brickslot Triple 105	0.1	2



Lifting hook for Brickslot access unit



Lifting key for Brickslot access unit



Single end cap



End cap – Double, Triple, Strip

Installation detail

Load class

Installation recommendations shown are ACO minimum recommendations for BS EN 1433:2002 load class requirements.

Ground conditions

The long term performance of a channel installation to sustain vertical and lateral loads depends upon:

- A) Ground conditions
- B) Stability of the adjacent pavement
- C) A durable concrete bed and surround

The recommended installation detail may require the minimum dimensions to be revised to achieve site specific load class requirements.

Cutting and jointing

Mitre joints are formed by cutting the channels to the required angle and butting them together with the appropriate sealant (e.g. Sikaflex 11FC or similar) or ACO Repair Kit. Where possible 90° joints and T's should be formed so that gratings do not have to be cut. Angles can be formed by connecting them using proprietary PVCu pipework attached to the ACO inlet/outlet end caps. For further details please contact ACO Design Services Team.

Note: For load classes higher than C 250, mitred joints are not recommended in vehicular areas. Where requested ACO can custom manufacture angled joints to order.

Isolation joints

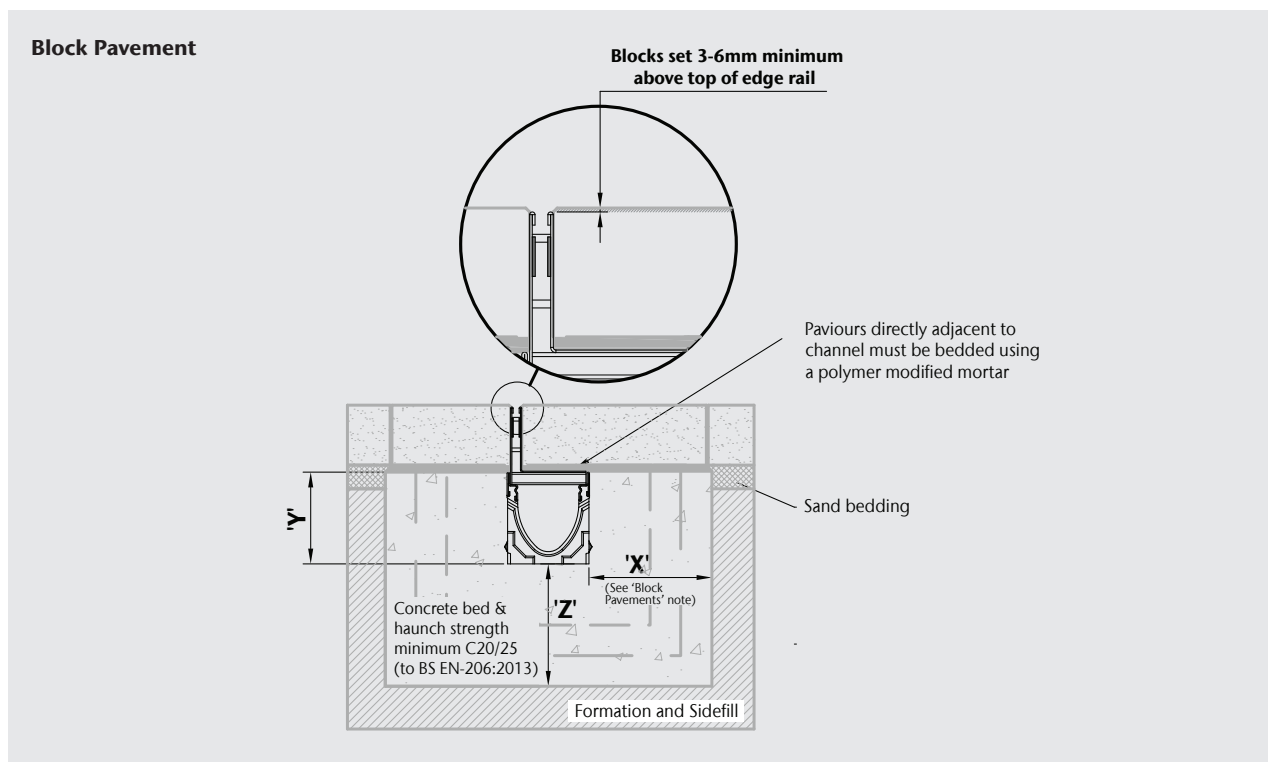
The channel must be isolated from the surrounding environment. An isolation joint must be positioned up to 1500mm from the channel wall. Any dowel bars must be located no nearer than 150mm from the channel wall. Other isolation joints in surrounding slab must be continued through the channel. Additional crack control may be required to comply with specifier requirements.

Installation into in-situ slab

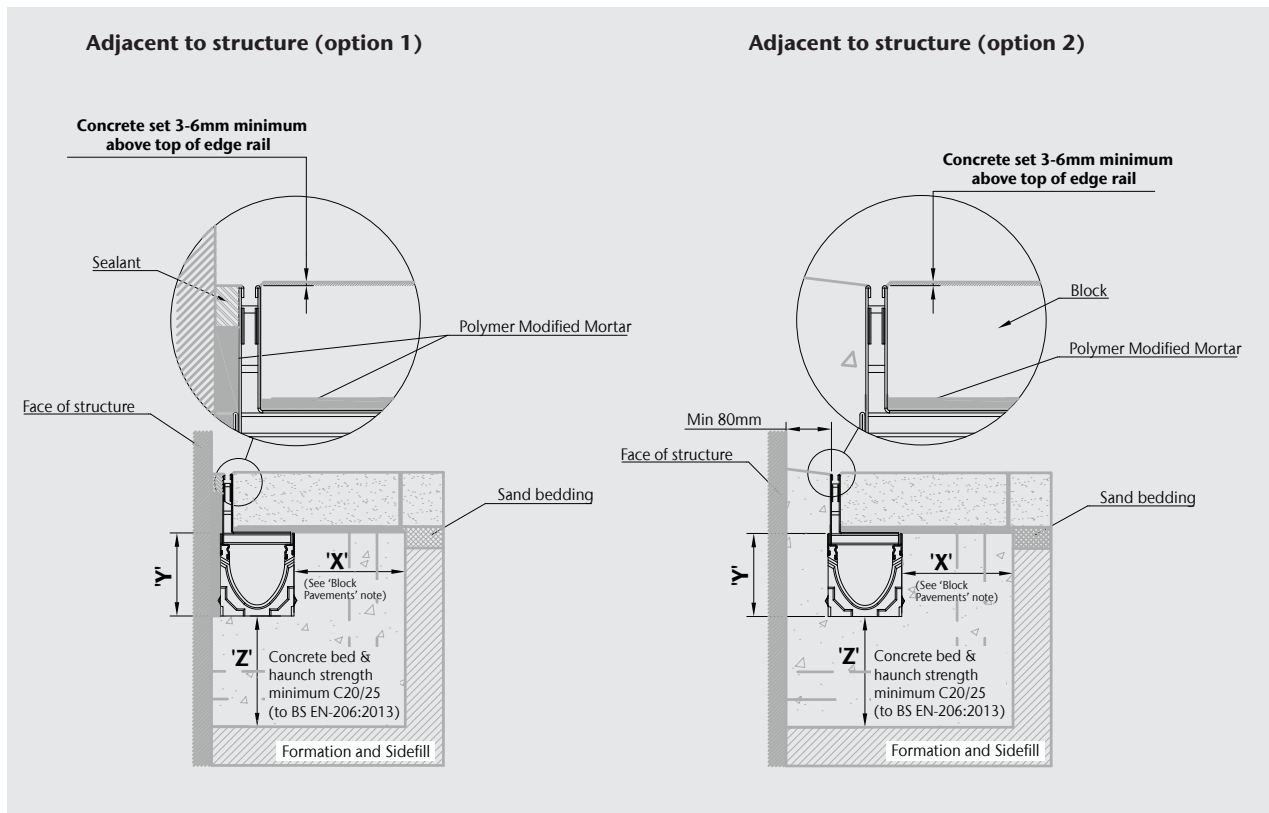
Where a channel is to be installed into an existing concrete slab it is necessary to cut a suitably sized pocket in the slab. The channel will then need to be bedded in polymer modified mortar of 25mm minimum thickness (this may vary depending on the type of mortar used). Engineering advice may be necessary.

Temporary installation

A channel installation is not complete until the final surfacing is laid. In any temporary condition, i.e., the channel walls projecting above adjacent ground, site traffic should not cross channels. Loose boards, stone fill or cover plates will not protect the channel walls or grating. A temporary channel crossing should be formed by raising the ground level locally, to 3-6mm above top of edge rail, either side of a channel for a distance of 750 to 1000mm, to form ramps. Note that the channel load class should be adequate to carry the site traffic.



Installation detail continued



Block pavements

The channel must be supported laterally. Blocks laid directly against a channel must be laid as a soldier course and restrained from movement by bedding securely on the concrete haunch e.g. by using a polymer modified mortar for bed and perpendicular joints (e.g. RONAFIX mortar mix C or similar). Alternatively, extend concrete haunch up to finished paving level (as depicted in Option 2). Blocks or slabs bedded on sand remote from the channel should be set at a higher level to compensate for possible settlement of the paving in service.

Grate locking system

Gratings should be securely fixed to the channel, where required, using an appropriate grate lock system (where available).

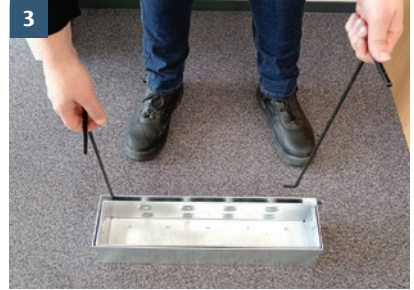
Concrete surround dimensions

		Load Class			
		A 15	B 125	C 250	D 400*
Minimum Dimensions (mm)	X	100	150	150	200
	Y	Full channel height (less Y2 where necessary)			
	Z	100	150	150	200
	Y2	35	35	35	35
Maximum Dimensions (mm)		35	35	35	35
Asphalt pavement only	Y3	100	60	60	60

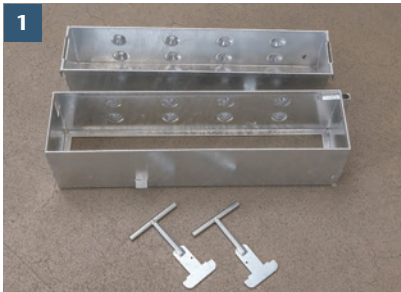
*E.g. Parking areas for all types of road vehicle. Not suitable for carriageways of public roads or motorways.

Maintenance

Brickslot access unit maintenance using lifting hooks



Brickslot access unit maintenance using lifting keys



Design support services

Surface water management system design can often be a complex task. Success in combining products and processes requires a thorough understanding of how these different elements work together.

The ACO Design Services Team is able to work closely with you through the entire design process to ensure accurate and cost-effective product selection is made.

Services we offer include (free and without obligation):

- Whole system design, from collection to the attenuation of surface water
- Hydraulic calculations and AutoCAD detailing
- Parts schedules
- Conduit files for MicroDrainage

ACO has embraced the concept of value engineering as an approach to on-site construction that saves both time and money.

ACO will review any design to minimise the total scheme and life cost of a proposal. The team can suggest the most appropriate range depending on your requirements.

Some ranges like MultiDrain or MonoDrain allow water to be contained and conveyed close to the surface, which accords with the principles advocated for Sustainable Drainage (SuDS Manual, 2015), by removing the need for pumping. Other ranges like Qmax allow attenuation – the storage of large volumes of water during storm events, reducing overall site costs.

For detailed designs using the ACO Hydraulic Design Software, please contact the ACO Water Management Design Services Team.

If manual calculations are preferred to using our QUAD software, hydraulic tables and instructions for manual calculations can be provided.

For design enquiries go to www.aco.co.uk/design-+-support-services





ACO BIM Models

BIM is the process of generating and managing data, and developing collaborative behaviours that will unlock new and more efficient ways of working at all stages of the project life-cycle.

These files will help contractors specify and optimise drainage systems in line with the overall benefits of BIM-

enabled working, including faster project delivery, reduced costs, reduced waste and greater project predictability.

Civils3D, IFC or Revit files are available for download.

www.aco.co.uk/aco-bim-models

Further Learning

ACO Professional Development

ACO has recognised that knowledge transfer is fundamental in keeping up-to-date with the latest advancements in surface water management and has a unique training offer that can be accessed online, in-house or at the state-of-art training facility at the ACO Academy.

In Company

ACO offers face-to-face professional development sessions. These are carefully designed to last up to 1 hour, so they can be undertaken across a lunch break.



A member of our team will contact you directly to discuss your requirements and will tailor the session to meet your needs.

Webinars

ACO has developed a series of webinars that will keep you up to date, bringing you technical expertise as well as more specific product information. Whatever your involvement from specification to installation, there will be a webinar to meet your needs and further your learning.



ACO Academy Days

ACO's training facility at its UK head office in Bedfordshire has a theatre-style facility that can hold up to 50 people as well as a number of breakout rooms for small groups.



Professional development training can be combined with more in-depth product training at the on-site learning zone.

Seminars

ACO is bringing the experts to you via our programme of regional events, and by sharing information from key influencers within the industry as well as more specific product information. ACO's seminar events will include opportunities to enhance existing knowledge as well as network and discuss thoughts and ideas with other delegates.



www.aco.co.uk/professional_development | email: ukprofessionaldevelopment@aco.co.uk



Case Studies

ACO has operated in the UK for over 30 years and in this time we have worked on ground breaking projects that have pushed the boundaries of surface water management. Our case studies provide bite sized information that counts towards your professional development and can provide inspiration for future projects.

www.aco.co.uk/case-studies



Colab

Colab is a collaboration of partnerships, bringing together CPD and self-certified content to ensure that knowledge is shared and accessible to the construction industry. Visit our content and CPD partner website: Colab to see more professional development content from partners such as ACO, FutureBuild, CIHT, The Edge, and CIWEM.

www.colab-cpd.co.uk



askACO

train | design | support | care



Every product from ACO Water Management supports the ACO WaterCycle



-
- ACO Water Management
Civils + Infrastructure
House & Garden
 - ACO Building Drainage
 - ACO Access
 - ACO Sport
 - ACO Wildlife
-

ACO Water Management

A division of ACO Technologies plc

ACO Business Park
Hitchin Road
Shefford
Bedfordshire
SG17 5TE

Tel: 01462 816666
Sales: customersupport@aco.co.uk
Project pricing: awmprojects@aco.co.uk
Technical: technical@aco.co.uk

www.aco.co.uk

ACO. we care for water

